

## Self Drilling Tek Screws



### Maxiseal Screws

5/16" Hexagon Washer Head, 15mm Integrated EPDM Washer

Fastening to Steel

Code	Size(mm)	Steel Thickness(mm)	Effective Thread Length(mm)	Box Qty
MXC26	5.5 x 26	1.2-3.5	10	250
MXC32	5.5 x 32	1.2-3.5	11	250
MXL38	5.5 x 38	4.0-12.5	16	2500

Fastening to Timber

Code	Size(mm)	Embedment Depth(mm)	Box Qty
MXW32	5.8 x 32	29	2000

Stitching Screws

Code	Size(mm)	Steel Thickness(mm)	Box Qty
MXS16	4.8 x 16	2 x 0.7 up to 2 x 1.2	500
MXS20	6.3 x 20	2 x 0.5 up to 2 x 0.9	250
MXS25	8.0 x 25	2 x 0.5 up to 2 x 0.9	1000

### Teks Screws

5/16" Hexagon Washer Head

Fastening to Steel

Code	Size(mm)	Steel Thickness(mm)	Effective Thread Length(mm)	Box Qty
PH14 Pan Head	4.8 x 14	1.5-3.5	4	500
TC13	4.8 x 13	1.5-2.0	4	500
TC16	4.8 x 16	1.2-3.5	6	500
TC25	5.5 x 25	1.2-3.5	8	500
TC50	5.5 x 50	1.2-3.5	42	3000
TC62	5.5 x 62	1.2-3.5	51	1000
TC75	5.5 x 75	1.2-3.5	65	1000
TC100	5.5 x 100	1.2-3.5	90	500
TL32	5.5 x 32	4.0-12.5	12	250
TL38	5.5 x 38	4.0-12.5	18	2500
TL50	5.5 x 50	4.0-12.5	30	2000
TL75	5.5 x 75	4.0-12.5	55	1000
TL100	5.5 x 100	4.0-12.5	80	500
TS20	4.8 x 20	0.5-1.2	5	5000

Fastening Standing Seam & Lip Fix Systems

Code	Size(mm)	Steel Thickness(mm)	Description	Box Qty
CFC16	4.8 x 16	1.5-3.5	Low Profile Head	8000
CFC24	4.8 x 25	1.5-3.5	Pancake Head	4000
CFC26	5.5 x 25	1.5-3.5	Pancake Head	4000
CFL32	5.5 x 32	4.0-12.5	Low Profile Head	2000
CFW26	4.8 x 25	23 (Timber Embedment)	Pancake Head	4000

### Hi-Thread Tek Screws

For roof and wall applications to cold rolled purlins and rails 1.2 to 3.5mm steel thickness

Code	Size(mm)	Build-up Range(mm)
MXHT45	5.5 x 45	18-27
MXHT60	5.5 x 60	25-42
MXHT70	5.5 x 70	35-52
MXHT80	5.5 x 80	45-62
MXHT100	5.5 x 100	50-82
MXHT125	5.5 x 125	75-107
MXHT150	5.5 x 150	100-132

For roof and wall applications to hot rolled purlins and rails 4.0 to 12.5mm steel thickness

Code	Size(mm)	Build-up Range(mm)
MXHTL75	5.5 x 75	30-47
MXHTL90	5.5 x 90	44-62
MXHTL120	5.5 x 120	54-92
MXHTL150	5.5 x 150	84-122

Bonded Washers to suit Tek Screws

Code	Dia(mm)	Material
16GB	16	Galv. Steel
16SS	16	Stainless Steel
30AL	30	Aluminium

### Electric Screwdriver



Tools & Accessories

Code	Description
BXVB	Buildex electric screwdriver 110v
EX250-50	Extension bar 50mm
MS5/16	Socket for 5/16" hex head screws
MES5/16	One piece extension bar and socket for 5/16" hex head screws
MBH50	Magnetic bit holder
P2	Phillips No.2 drive bit
P3	Phillips No.3 drive bit
2PSD	Phillips No.2 square drive bit

## Timber-fix TekS Screws

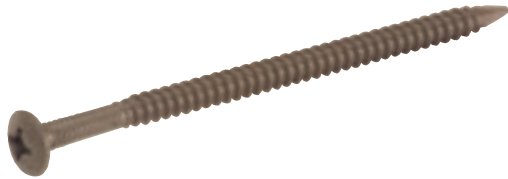
Teks carbon steel self-drilling screws featuring 'wings' to drill clearance hole in timber

Code	Size (mm)	Timber Thickness(mm)	Steel Thickness(mm)	Head Style	Box Qty
TFC36	4.8 x 36	6-20	1.5-3.0	P2 Wafer	3000
TFC38	4.2 x 36	6-22	1.5-3.0	P2 Csk Ribbed	100
TFC45	4.8 x 45	10-27	1.5-3.0	P2 Csk Ribbed	100
TFC50	5.5 x 50	13-30	1.5-3.0	P3 Csk Ribbed	100
TFC61	5.5 x 61	13-40	1.5-3.0	P3 Csk Ribbed	100
TFC80	5.5 x 80	25-60	1.5-3.0	P3 Wafer	100
TFC100	5.5 x 100	45-80	1.5-3.0	P3 Wafer	100
TFC120	5.5 x 120	40-100	1.5-3.0	P3 Wafer	100
TFM57	5.5 x 57	18-35	4.0-6.0	P3 Csk	250
TFM70	5.5 x 70	18-40	4.0-6.0	P3 Csk	250
TFM75	6.3 x 75	18-50	4.0-6.0	P3 Csk	200
TFL42	5.5 x 42	10-13	4.0-10.0	P3 Csk	100
TFL65	5.5 x 65	10-28	4.0-10.0	P3 Csk	100
TFL80	5.5 x 80	10-42	4.0-10.0	P3 Csk	100
TFL90	5.5 x 90	35-55	4.0-10.0	P3 Wafer	100
TFL100	5.5 x 100	45-65	4.0-10.0	P3 Wafer	100



## Roofgrip Screws

For insulation to metal and timber decking



To steel decking 0.7-1.2mm or timber

Code	Size(mm)	Build-up Range(mm)	Box Qty
RG41	5.5 x 41	13-26	1000
RG57	5.5 x 57	13-42	1000
RG75	5.5 x 75	26-60	1000
RG82	5.5 x 82	26-67	1000
RG96	5.5 x 96	26-81	1000
RG111	5.5 x 111	42-96	1000
RG126	5.5 x 126	58-111	1000
RG151	5.5 x 151	83-136	1000
RG177	5.5 x 177	83-162	1000
RG202	5.5 x 202	108-187	1000

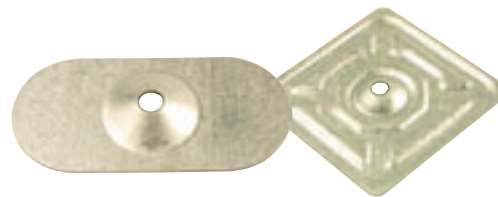
## Heavy Duty Roofgrip Screws

For insulation to concrete, metal & timber decking

To Steel Decking 0.7-1.2mm, Timber or Concrete

Code	Size(mm)	Build-up Range(mm)	Box Qty
HRG38	6.3 x 38	0-23	1000
HRG51	6.3 x 51	19-36	1000
HRG76	6.3 x 76	44-61	1000
HRG100	6.3 x 100	68-85	1000
HRG127	6.3 x 127	95-112	1000
HRG152	6.3 x 152	120-137	1000
HRG176	6.3 x 176	144-161	500
HRG200	6.3 x 200	168-185	500

## Stress Plates



Code	Description	Box Qty
SP50	50mm round galv. metal	1000
RG7575G	75mm square galv. metal	1000
RG8040	80mm x 40mm galv. metal	1000
RGP80	80mm round plastic	1000

### Metal Decking Applications

Use RG or HRG screws. Penetrate through metal decking by at least 15mm

### Timber Decking Applications

Use RG or HRG in minimum 19mm thickness plywood or timber decking. In 19mm plywood penetrate through decking by at least 15mm. In thicker timber ensure a minimum embedment of 38mm

### Concrete Decking Applications

Use HRG screws. Drill a 5.5mm dia. hole into concrete to provide a minimum embedment of 32mm. The tapping hole must be a minimum of 15mm deeper than the HRG screw embedment depth

## Dektite Pipe Flashings

### Round Base Range

EPDM Grey Dektite for working temperatures -30°C to 115°C

Code	Base Dia(mm)	Pipe Dia(mm)	Pipe Dia(mm)
		Profile up to 40mm	Profile deeper than 40mm
DF100	92	0-35	n/a
DF101	120	5-65	5-55
DF102	160	50-75	50-65
DF103	195	5-120	5-110
DF104	235	75-160	75-135
DF105	275	115-195	115-170
DF106	325	125-230	125-195
DF107	370	150-275	150-225
DF108	420	175-325	175-270
DF109	650	250-480	250-420

Silicone Red Dektite for temperatures -60°C to 200°C

Code	Base Dia(mm)	Pipe Dia(mm)	Pipe Dia(mm)
		Profile up to 40mm	Profile deeper than 40mm
DF203	195	5-120	5-110
DF204	235	75-160	75-135
DF205	275	115-195	115-170
DF206	325	125-230	125-195
DF207	370	150-275	150-225
DF208	420	175-325	175-270
DF209	650	250-480	250-420

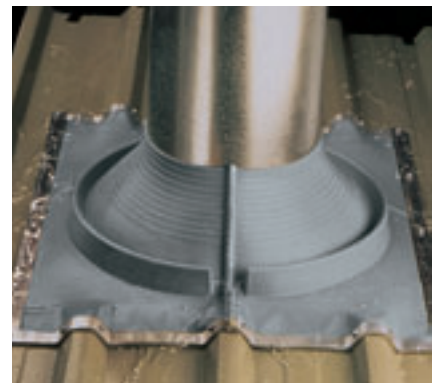


ROUND BASE

### Soaker Range

EPDM Grey Dektite for working temperatures -30°C to 115°C

Code	Base Size(mm)	Pipe Dia(mm)
		Profile up to 40mm
DF602	410 x 360	75-155
DF603	485 x 460	114-254
DF605	708 x 635	254-410
DF606	1415 x 905	410-610



SOAKER

Silicone Red Dektite for temperatures -60°C to 200°C

Code	Base Size(mm)	Pipe Dia(mm)
		Profile up to 40mm
DF702	410 x 360	75-155
DF703	485 x 460	114-254
DF705	708 x 635	254-410
DF706	1415 x 905	410-610



RETROFIT

### Retrofit Range

EPDM Grey Dektite for working temperatures -30°C to 115°C

Code	Base Dia(mm)	Pipe Dia(mm)	Pipe Dia(mm)
		Profile up to 40mm	Profile deeper than 40mm
RF801	160	20-70	20-60
RF802	275	50-190	50-160
RF803	370	85-255	85-215

### Stripflash

EPDM Grey Dektite for working temperatures -30°C to 115°C

Code	Description
DSFEG	10m roll x 245mm wide

### Fixing Kits

Code	Contents
FX901	78g silicone sealant, trimming knife, drill bit, 12 washed screws & caps, lubricant and fitting instructions
FX902	3 x 78g silicone sealant, trimming knife, drill bit, 30 washed screws & caps, lubricant and fitting instructions
FX903	310ml silicone sealant, trimming knife, drill bit, 150 washed screws & caps, lubricant and fitting instructions



STRIPFLASH

## Rivets

### Aluminium/Steel Standard Dome Head Rivets

Part No.	Size (mm)	Hole Dia. (mm)	Grip Range (mm)	Box Qty
630 0014	2.4 x 4	2.5	0.5-1.5	1000
630 0022	2.4 x 6	2.5	1.5-3.5	1000
630 0030	2.4 x 8	2.5	3.5-5.0	1000
630 0103	3 x 4	3.1	0.5-1.5	500
630 0111	3 x 5	3.1	1.5-2.5	500
630 0138	3 x 6	3.1	2.5-3.5	500
630 0146	3 x 7	3.1	3.5-4.5	500
630 0154	3 x 8	3.1	4.5-5.0	500
630 0162	3 x 10	3.1	5.0-7.0	500
630 0170	3 x 12	3.1	7.0-9.0	500
630 0189	3 x 14	3.1	9.0-11.0	500
630 0197	3 x 16	3.1	11.0-13.0	500
630 0200	3 x 18	3.1	13.0-15.0	250
630 0219	3 x 20	3.1	15.0-17.0	250
630 0227	3 x 25	3.1	17.0-22.0	250
630 0235	3 x 30	3.1	22.0-26.0	250
630 0308	3.2 x 4	3.3	0.5-1.5	500
630 0316	3.2 x 6	3.3	1.5-3.5	500
630 0324	3.2 x 8	3.3	3.5-5.0	500
630 0332	3.2 x 10	3.3	5.0-7.0	500
630 0340	3.2 x 12	3.3	7.0-9.0	500
630 0081	3.2 x 14	3.3	9.0-11.0	500
630 0359	3.2 x 16	3.3	11.0-13.0	500
630 0383	3.2 x 18	3.3	13.0-15.0	500
630 0367	3.2 x 20	3.3	15.0-17.0	500
630 0375	3.2 x 25	3.3	17.0-22.0	500
630 0405	4 x 5	4.1	0.5-1.5	500
630 0413	4 x 6	4.1	1.5-3.0	500
630 0421	4 x 7	4.1	3.0-4.0	500
630 0448	4 x 8	4.1	4.0-5.0	500
630 0456	4 x 10	4.1	5.0-6.5	500
630 0464	4 x 12	4.1	6.5-8.5	500
630 0472	4 x 14	4.1	8.5-10.5	500
630 0480	4 x 16	4.1	10.5-12.5	500
630 0499	4 x 18	4.1	12.5-14.5	500
630 0502	4 x 20	4.1	14.5-16.5	500
630 0529	4 x 25	4.1	16.5-21.5	500
630 0545	4 x 30	4.1	21.5-26.0	250
630 0561	4 x 35	4.1	26.0-30.0	250
630 0596	4 x 40	4.1	30.0-35.0	250
630 0707	4.8 x 6	4.9	2.0-2.5	500
630 0715	4.8 x 8	4.9	2.5-4.5	500
630 0723	4.8 x 10	4.9	4.5-6.0	500
630 0731	4.8 x 12	4.9	6.0-8.0	500
630 0758	4.8 x 14	4.9	8.0-10.0	500
630 0766	4.8 x 16	4.9	10.0-12.0	500
630 0774	4.8 x 18	4.9	12.0-14.0	500
630 0782	4.8 x 20	4.9	14.0-15.0	250
630 0804	4.8 x 25	4.9	15.0-20.0	250
630 0820	4.8 x 30	4.9	20.0-25.0	100

### Alu/Alu Bulb-Tite Standard Dome Head Rivets

Part No.	Size (mm)	Hole Dia. (mm)	Grip Range (mm)	Box Qty
660 0611	5.2 x 19.1	5.3-5.5	1.5-6.4	3000

### Aluminium/Steel Standard Dome Head Rivets

Part No.	Size (mm)	Hole Dia. (mm)	Grip Range (mm)	Box Qty
630 0901	5 x 6	5.1	2.0-2.5	500
630 0928	5 x 8	5.1	2.5-4.5	500
630 0936	5 x 10	5.1	4.5-6.0	500
630 0944	5 x 12	5.1	6.0-8.0	500
630 0952	5 x 14	5.1	8.0-10.0	500
630 0960	5 x 16	5.1	10.0-12.0	500
630 0979	5 x 18	5.1	12.0-14.0	500
630 0987	5 x 20	5.1	14.0-15.0	250
630 1002	5 x 25	5.1	15.0-20.0	250
630 1029	5 x 30	5.1	20.0-25.0	100
630 1045	5 x 35	5.1	25.0-30.0	100
630 1061	5 x 40	5.1	30.0-35.0	100
630 1096	5 x 45	5.1	35.0-40.0	100
630 1126	5 x 50	5.1	40.0-45.0	100
630 1142	5 x 55	5.1	45.0-48.0	100
630 1169	5 x 60	5.1	48.0-52.0	100
630 1185	5 x 65	5.1	52.0-57.0	100
630 1207	5 x 70	5.1	57.0-62.0	100
630 1223	5 x 80	5.1	62.0-72.0	100
630 1304	6 x 8	6.1	2.0-3.0	250
630 1312	6 x 10	6.1	3.0-5.0	250
630 1320	6 x 12	6.1	5.0-7.0	250
630 1339	6 x 16	6.1	7.0-11.0	250
630 1347	6 x 18	6.1	11.0-13.0	250
630 1355	6 x 20	6.1	13.0-15.0	250
630 1371	6 x 25	6.1	15.0-20.0	200
630 1401	6 x 30	6.1	20.0-24.0	200
630 1436	6 x 35	6.1	24.0-29.0	100
630 1452	6 x 40	6.1	29.0-34.0	100
630 1495	6 x 50	6.1	34.0-44.0	100
630 1606	6.4 x 12	6.5	2.0-6.0	250
630 1622	6.4 x 16	6.5	6.0-10.0	250
630 1940	6.4 x 18	6.5	10.0-12.0	250
630 1649	6.4 x 20	6.5	12.0-14.0	200
630 1665	6.4 x 25	6.5	14.0-18.0	200
630 1681	6.4 x 30	6.5	18.0-23.0	100



## Rivets

## Steel/Steel Standard Dome Head Rivets

Part No.	Size (mm)	Hole Dia. (mm)	Grip Range (mm)	Box Qty
631 0117	3 x 5	3.1	0.5-2.0	500
631 0133	3 x 6	3.1	2.0-3.0	500
631 0141	3 x 8	3.1	3.0-5.0	500
631 0168	3 x 10	3.1	5.0-6.5	500
631 0176	3 x 12	3.1	6.5-8.5	500
631 0192	3 x 16	3.1	8.5-12.5	500
631 0206	3 x 18	3.1	12.5-14.5	500
631 0214	3 x 20	3.1	14.5-16.5	500
631 0303	3.2 x 6	3.3	0.5-3.0	500
631 0311	3.2 x 8	3.3	3.0-5.0	500
631 0338	3.2 x 10	3.3	5.0-6.5	500
631 0346	3.2 x 12	3.3	6.5-8.5	500
631 0354	3.2 x 16	3.3	8.5-12.5	500
631 0249	3.2 x 18	3.3	12.5-14.5	500
631 0362	3.2 x 20	3.3	14.5-16.5	500
631 0419	4 x 6	4.1	0.5-2.5	500
631 0443	4 x 8	4.1	2.5-4.5	500
631 0451	4 x 10	4.1	4.5-6.5	500
631 0478	4 x 12	4.1	6.5-8.5	500
631 0486	4 x 16	4.1	8.5-12.0	500
631 0516	4 x 18	4.1	12.0-14.0	500
631 0508	4 x 20	4.1	14.0-16.0	500
631 0524	4 x 25	4.1	16.0-21.0	500
631 0648	4.8 x 6	4.9	0.5-1.5	500
631 0710	4.8 x 8	4.9	2.0-4.0	500
631 0729	4.8 x 10	4.9	4.0-6.0	500
631 0737	4.8 x 12	4.9	6.0-8.0	500
631 0761	4.8 x 16	4.9	8.0-11.0	500
631 0788	4.8 x 20	4.9	11.0-15.0	250
631 0818	4.8 x 25	4.9	15.0-20.0	250

Part No.	Size (mm)	Hole Dia. (mm)	Grip Range (mm)	Box Qty
631 0915	5 x 8	5.1	2.0-4.0	500
631 0923	5 x 10	5.1	4.0-6.0	500
631 0931	5 x 12	5.1	6.0-8.0	500
631 0958	5 x 14	5.1	8.0-9.5	500
631 0966	5 x 16	5.1	9.5-11.0	500
631 0974	5 x 18	5.1	11.0-13.0	500
631 0982	5 x 20	5.1	13.0-15.0	250
631 1008	5 x 25	5.1	15.0-20.0	250
631 1024	5 x 30	5.1	20.0-25.0	100
631 1040	5 x 35	5.1	25.0-30.0	100
631 1067	5 x 40	5.1	30.0-34.0	100
631 1091	5 x 45	5.1	34.0-39.0	100
631 1121	5 x 50	5.1	39.0-44.0	100
631 1202	6 x 10	6.1	2.5-4.5	250
631 1210	6 x 12	6.1	4.5-6.5	250
631 1229	6 x 14	6.1	6.5-8.5	250
631 1237	6 x 16	6.1	8.5-10.5	250
631 1245	6 x 20	6.1	10.5-14.5	250
631 1253	6 x 25	6.1	14.5-19.5	250
631 1598	6.4 x 8	6.5	1.0-3.0	250
631 1601	6.4 x 12	6.5	3.0-6.0	250
631 1628	6.4 x 16	6.5	6.0-9.0	250
631 1563	6.4 x 18	6.5	9.0-11.0	200
631 1644	6.4 x 20	6.5	11.0-13.0	200
631 1660	6.4 x 25	6.5	13.0-17.0	200

## Hand Riveting Tools

Part No.	Type	Working Range
703 0029	NTS	Up to 5mm Alu/4mm Steel
705 0011	NTX	Up to 5mm Alu/4mm Steel
701 0001	Flipper	Up to 5mm Alu/4mm Steel
712 0028	SN 2 Lazy Tong	Up to 6.4mm all materials

## Rechargeable 12 Volt Battery Riveting Tools



## Accubird

## Specification:

Rechargeable 12 Volt Battery Riveting Tool  
 Supplied with battery and quick charger in steel case  
 Nosepieces: 17/24 17/27 17/29 17 32  
 Weight: 2.2kg with battery

## Working Range:

Blind rivets up to 5mm dia. in all materials  
 BULB-TITE blind rivets: 4.0, 5.2 and 6.3mm dia.  
 in aluminium and steel

## Accessories

12v Battery  
 12v Quick Charger - Charging time approx 60 mins



## Powerbird

## Specification:

Rechargeable 12 Volt High Power Battery Riveting Tool  
 Supplied with battery and quick charger in steel case  
 Nosepieces: 17/32 17/36 17/40 17/45  
 Weight: 2.2kg with battery

## Working Range:

Blind rivets from 4.8mm dia. steel up to 6.4mm  
 in all materials  
 BULB-TITE blind rivets up to 7.7mm all materials  
 MEGA GRIP blind rivets up to 6.6mm all materials

## Accessories

12v 1.7Ah Battery  
 12v Quick Charger - Charging time approx 60 mins

## Rivet Nuts



### Aluminium Standard Dome Head Rivet Nuts

Part No.	Size (mm)	Hole Dia. (mm)	Grip Range (mm)	Box Qty
641 0030	M4 x 6 x 11.0	6.1	0.25-3.0	500
641 0073	M4 x 6 x 13.0	6.1	2.5-4.5	500
641 0138	M5 x 7 x 11.5	7.1	0.25-3.0	500
641 0170	M5 x 7 x 13.5	7.1	2.5-5.0	500
641 0235	M6 x 9 x 15.5	9.1	0.25-3.5	250
641 0278	M6 x 9 x 18.0	9.1	3.0-5.5	250
641 0332	M8 x 11 x 17.0	11.1	0.25-3.5	100
641 0367	M8 x 11 x 20.0	11.1	3.0-6.0	100
641 0456	M10 x 12 x 17.5	12.1	0.25-3.5	100
641 0480	M10 x 12 x 20.5	12.1	3.0-6.0	100

### Steel Standard Dome Head Rivet Nuts

Part No.	Size (mm)	Hole Dia. (mm)	Grip Range (mm)	Box Qty
642 0052	M4 x 6 x 11.0	6.1	0.25-3.0	500
642 0095	M4 x 6 x 13.0	6.1	2.5-4.5	500
642 0176	M5 x 7 x 11.5	7.1	0.25-3.0	500
642 0214	M5 x 7 x 13.5	7.1	2.5-5.0	500
642 0273	M6 x 9 x 15.5	9.1	0.25-3.5	250
642 0338	M6 x 9 x 18.0	9.1	3.0-5.5	250
642 0397	M8 x 11 x 17.0	11.1	0.25-3.5	100
642 0427	M8 x 11 x 20.0	11.1	3.0-6.0	100
642 0494	M10 x 12 x 17.5	12.1	0.25-3.5	100
642 0524	M10 x 12 x 20.5	12.1	3.0-6.0	100

### Aluminium Countersunk (90°)

Part No.	Size (mm)	Hole Dia. (mm)	Grip Range (mm)	Box Qty
641 2017	M4 x 6 x 12.0	6.1	1.5-3.5	500
641 2041	M4 x 6 x 13.5	6.1	3.0-5.0	500
641 2130	M5 x 7 x 13.5	7.1	1.5-4.0	500
641 2149	M5 x 7 x 15.5	7.1	3.5-6.0	500
641 2238	M6 x 9 x 17.0	9.1	1.5-4.5	250
641 2246	M6 x 9 x 19.0	9.1	4.0-6.5	250
641 2335	M8 x 11 x 18.5	11.1	1.5-4.5	100
641 2343	M8 x 11 x 20.5	11.1	4.0-6.5	100
641 2432	M10 x 12 x 19.0	12.1	1.5-4.5	100
641 2440	M10 x 12 x 21.0	12.1	4.0-6.5	100

### Steel Countersunk (90°)

Part No.	Size (mm)	Hole Dia. (mm)	Grip Range (mm)	Box Qty
642 2012	M4 x 6 x 12.0	6.1	1.5-3.5	500
642 2047	M4 x 6 x 13.5	6.1	3.0-5.0	500
642 2144	M5 x 7 x 13.5	7.1	1.5-4.0	500
642 2152	M5 x 7 x 15.5	7.1	3.5-6.0	500
642 2233	M6 x 9 x 17.0	9.1	1.5-4.5	250
642 2241	M6 x 9 x 19.0	9.1	4.0-6.5	250
642 2330	M8 x 11 x 18.5	11.1	1.5-4.5	100
642 2349	M8 x 11 x 20.5	11.1	4.0-6.5	100
642 2438	M10 x 12 x 19.0	12.1	1.5-4.5	100
642 2446	M10 x 12 x 21.0	12.1	4.0-6.5	100

## Battery Operated Blind Rivet Nut Tool



### Firebird

#### Specification:

Rechargeable 12 Volt Battery Blind Rivet Nut Tool  
Supplied with battery and quick charger in steel case  
M4 M5 M6 Threaded Mandrels and Nosepieces  
Weight: 2.3kg with battery

#### Working Range:

Up to M10 in aluminium  
Up to M8 in steel  
Up to M6 in stainless steel

#### Accessories

12v Battery  
12v Quick Charger - Charging time approx 60 mins

### Rivet Nut Hand Tools

Part No.	Type	Working Range
720 0056	GBM 10 - M4	Up to M6 Alu and M5 Steel and Stainless Steel
720 0013	GBM 10 - M5	Up to M6 Alu and M5 Steel and Stainless Steel
720 0064	GBM 10 - M6	Up to M6 Alu and M5 Steel and Stainless Steel
721 0027	GBM 20 - M4	Up to M6 Alu and M5 Steel and Stainless Steel
721 0019	GBM 20 - M5	Up to M6 Alu and M5 Steel and Stainless Steel
721 0035	GBM 20 - M6	Up to M6 Alu and M5 Steel and Stainless Steel
722 0022	GBM 30 - M5	M5 up to M10 all materials
722 0014	GBM 30 - M6	M5 up to M10 all materials
722 0030	GBM 30 - M8	M5 up to M10 all materials
722 0049	GBM 30 - M10	M5 up to M10 all materials

## Self Tapping Screws

## AB Point Zinc Plated

Size(mm)	Csk Pozi	Pan Pozi	Csk Slot	Pan Slot
4g x 3/16"		●		●
4g x 1/4"	●	●	●	●
4g x 5/16"	●	●		●
4g x 3/8"	●	●	●	●
4g x 1/2"	●	●	●	●
4g x 5/8"	●	●	●	●
4g x 3/4"	●	●	●	●
4g x 1"	●	●	●	●
6g x 1/4"		●		●
6g x 5/16"		●		●
6g x 3/8"	●	●	●	●
6g x 1/2"	●	●	●	●
6g x 5/8"	●	●	●	●
6g x 3/4"	●	●	●	●
6g x 1"	●	●	●	●
6g x 1 1/4"	●	●	●	●
6g x 1 1/2"	●	●	●	●
8g x 1/4"				
8g x 5/16"		●		●
8g x 3/8"	●	●	●	●
8g x 1/2"	●	●	●	●
8g x 5/8"	●	●	●	●
8g x 3/4"	●	●	●	●
8g x 1"	●	●	●	●
8g x 1 1/4"	●	●	●	●
8g x 1 1/2"	●	●	●	●
8g x 1 3/4"	●	●	●	●
8g x 2"	●	●	●	●
8g x 2 1/2"				
10g x 3/8"		●		●
10g x 1/2"	●	●	●	●
10g x 5/8"	●	●	●	●
10g x 3/4"	●	●	●	●
10g x 1"	●	●	●	●
10g x 1 1/4"	●	●	●	●
10g x 1 1/2"	●	●	●	●
10g x 1 3/4"	●	●	●	●
10g x 2"	●	●	●	●
10g x 2 1/2"				
12g x 1/2"		●		●
12g x 5/8"		●		●
12g x 3/4"		●	●	●
12g x 1"	●	●	●	●
12g x 1 1/4"	●	●	●	●
12g x 1 1/2"	●	●	●	●
12g x 1 3/4"	●			
12g x 2"	●		●	●
12g x 2 1/2"				
14g x 1/2"		●		●
14 x 5/8"		●		●
14g x 3/4"		●	●	●
14g x 1"		●	●	●
14g x 1 1/4"		●		●
14g x 1 1/2"	●	●	●	●
14g x 1 3/4"	●			
14g x 2"	●	●	●	●
14g x 2 1/2"				
14g x 3"				

## AB Point Stainless Steel

Size(mm)	Csk Pozi	Pan Pozi	Csk Slot	Pan Slot
4g x 3/16"				
4g x 1/4"	●	●	●	●
4g x 5/16"	●	●		●
4g x 3/8"	●	●	●	●
4g x 1/2"	●	●	●	●
4g x 5/8"	●	●	●	●
4g x 3/4"	●	●	●	●
4g x 1"	●	●	●	●
6g x 1/4"	●	●	●	●
6g x 5/16"	●	●	●	●
6g x 3/8"	●	●	●	●
6g x 1/2"	●	●	●	●
6g x 5/8"	●	●	●	●
6g x 3/4"	●	●	●	●
6g x 1"	●	●	●	●
6g x 1 1/4"	●	●	●	●
6g x 1 1/2"	●	●	●	●
8g x 1/4"		●	●	●
8g x 5/16"		●		●
8g x 3/8"	●	●	●	●
8g x 1/2"	●	●	●	●
8g x 5/8"	●	●	●	●
8g x 3/4"	●	●	●	●
8g x 1"	●	●	●	●
8g x 1 1/4"	●	●	●	●
8g x 1 1/2"	●	●	●	●
8g x 1 3/4"	●	●		
8g x 2"	●	●	●	●
8g x 2 1/2"	●	●		
10g x 3/8"		●	●	●
10g x 1/2"	●	●	●	●
10g x 5/8"	●	●	●	●
10g x 3/4"	●	●	●	●
10g x 1"	●	●	●	●
10g x 1 1/4"	●	●	●	●
10g x 1 1/2"	●	●	●	●
10g x 1 3/4"	●	●		
10g x 2"	●	●	●	●
10g x 2 1/2"	●	●		
12g x 1/2"	●	●	●	●
12g x 5/8"	●	●	●	●
12g x 3/4"	●	●	●	●
12g x 1"	●	●	●	●
12g x 1 1/4"	●	●	●	●
12g x 1 1/2"	●	●	●	●
12g x 1 3/4"	●	●		
12g x 2"	●	●	●	●
12g x 2 1/2"	●	●		
14g x 1/2"		●	●	●
14g x 5/8"		●	●	●
14g x 3/4"	●	●	●	●
14g x 1"	●	●	●	●
14g x 1 1/4"		●	●	●
14g x 1 1/2"	●	●	●	●
14g x 1 3/4"	●			
14g x 2"	●	●	●	●
14g x 2 1/2"	●	●		
14g x 3"	●			

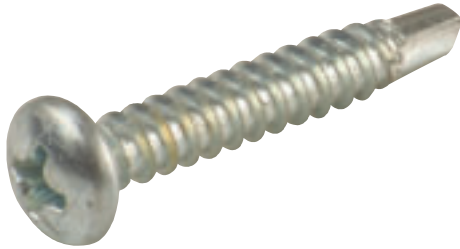


## Roofing Bolts c/w Square Nuts Zinc Plated

Size(mm)	M5	M6	M8	M10
8	●	●		
10	●	●		
12	●	●	●	
16	●	●	●	
20	●	●	●	●
25	●	●	●	●
30	●	●	●	●
35	●	●	●	●
40	●	●	●	●
50	●	●	●	●
60	●	●	●	●
70	●	●	●	●
80		●	●	●
90		●	●	●
100		●	●	●
120		●	●	●
140		●	●	●
160		●	●	●
180		●	●	●
200		●	●	●
220			●	



## Self Drilling Screws



### Pan Phillips Zinc Plated

Sizes	
6g x 5/8"	(3.5 x 16)
6g x 1"	(3.5 x 25)
6g x 1 1/4"	(3.5 x 32)
6g x 1 1/2"	(3.5 x 38)
8g x 1/2"	(4.2 x 12.7)
8g x 3/4"	(4.2 x 19)
8g x 1"	(4.2 x 25)

### Wafer Phillips Zinc Plated

Sizes	
8g x 9/16"	(4.2 x 14)

## Sela Washers & Covers



### Washers

Size	Ref.	Colour
28 x 6mm	50	Clear
28 x 6mm	58	Black

### Covers

Size	Ref.	Colour
28mm	50	Clear
28mm	58	Black