

Hexagon Head Setscrews High Tensile Grade 8.8 Zinc Plated



Size(mm)	M4	M5	M6	M8	M10	M12	M16	M20	M24
8		●	●						
10	●	●	●	●					
12	●	●	●	●	●				
16	●	●	●	●	●				
20	●	●	●	●	●	●			
25	●	●	●	●	●	●	●		
30		●	●	●	●	●	●	●	
35		●	●	●	●	●	●	●	
40		●	●	●	●	●	●	●	●
45			●	●	●	●	●	●	●
50	●	●	●	●	●	●	●	●	●
55			●	●	●	●	●	●	●
60		●	●	●	●	●	●	●	●
65				●	●	●	●	●	●
70			●	●	●	●	●	●	●
75			●	●	●	●	●	●	●
80			●	●	●	●	●	●	●
90			●	●	●	●	●	●	●
100			●	●	●	●	●	●	●
120				●	●				

Hexagon Head Setscrews A2 Stainless Steel



Size(mm)	M4	M5	M6	M8	M10	M12	M16	M20	M24
8		●	●	●					
10	●	●	●	●					
12	●	●	●	●	●				
16	●	●	●	●	●	●			
20	●	●	●	●	●	●	●		
25	●	●	●	●	●	●	●	●	
30	●	●	●	●	●	●	●	●	●
35	●	●	●	●	●	●	●	●	●
40	●	●	●	●	●	●	●	●	●
45	●	●	●	●	●	●	●	●	●
50	●	●	●	●	●	●	●	●	●
55		●	●	●	●	●	●	●	●
60		●	●	●	●	●	●	●	●
65		●	●	●	●	●	●	●	●
70		●	●	●	●	●	●	●	●
75		●	●	●	●	●	●	●	●
80		●	●	●	●	●	●	●	●
90			●	●	●	●	●	●	●
100			●	●	●	●	●	●	●
110				●	●	●	●	●	●
120				●	●	●	●	●	●
130				●	●	●	●	●	●
140				●	●	●	●	●	●
150				●	●	●	●	●	●
200						●	●	●	●

Hexagon Head Setscrews DIN 558 Zinc Plated

Size(mm)	M6	M8	M10	M12	M16	M20
12	●					
16	●	●	●			
20	●	●	●	●		
25	●	●	●	●	●	
30	●	●	●	●	●	●
35	●	●	●	●	●	●
40	●	●	●	●	●	●
45	●	●	●	●	●	●
50	●	●	●	●	●	●
55				●	●	
60	●	●	●	●	●	●
65		●		●	●	
70	●	●	●	●	●	●
75	●	●	●	●	●	●
80	●	●	●	●	●	●
90	●	●	●	●	●	●
100	●	●	●	●	●	●
120					●	

Hexagon Head Setscrews A4 Stainless Steel

Size(mm)	M4	M5	M6	M8	M10	M12	M16
12		●	●	●			
16			●	●			
20			●	●	●	●	
25			●	●	●	●	●
30			●	●	●	●	●
35			●		●	●	
40			●	●	●	●	●
45							●
50					●	●	●
55							
60							
75						●	●
90						●	●

Hexagon Head Bolts High Tensile Grade 8.8 Zinc Plated



Size(mm)	M6	M8	M10	M12	M16	M20	M24
25	●						
30	●	●	●				
35	●	●	●				
40	●	●	●	●			
45	●	●	●	●	●		
50	●	●	●	●	●		
55	●	●	●	●	●	●	
60	●	●	●	●	●	●	
65	●	●	●	●	●	●	
70	●	●	●	●	●	●	●
75	●	●	●	●	●	●	●
80		●	●	●	●	●	●
85		●					
90		●	●	●	●	●	●
100		●	●	●	●	●	●
110		●	●	●	●	●	●
120		●	●	●	●	●	●
130		●	●	●	●	●	●
140		●	●	●	●	●	●
150		●	●	●	●	●	●
160				●	●	●	●
170				●			●
180				●			●
190				●			●
200				●			●
220							●
240							●
250							●

Hex Round Hex Bolts & Nuts Grade 4.6 Zinc Plated



Size(mm)	M6	M8	M10	M12	M16	M20	M24
20	●						
25	●	●	●	●			
30	●	●	●	●	●		
35	●	●	●	●	●		
40	●	●	●	●	●	●	
45			●	●	●	●	
50	●	●	●	●	●	●	
55			●	●	●	●	
60	●	●	●	●	●	●	●
65	●		●	●	●	●	
70		●	●	●	●	●	●
75		●	●	●	●	●	●
80	●	●	●	●	●	●	●
90	●		●	●	●	●	●
100	●	●	●	●	●	●	●
110		●	●	●	●	●	●
120		●	●	●	●	●	●
125						●	
130			●	●	●	●	●
140			●	●	●	●	●
150			●	●	●	●	●
160			●	●	●	●	●
170				●		●	●
180			●	●	●	●	
190						●	●
200			●	●	●	●	●
220				●	●	●	●
250							●
260				●		●	
300				●	●		

Cup Square Hex Bolts & Nuts Zinc Plated



Size(mm)	M6	M8	M10	M12
16		●		
20	●	●	●	
25	●	●	●	
30	●	●	●	
35	●	●	●	
40	●	●	●	●
45	●	●	●	●
50	●	●	●	●
55	●	●		●
60	●	●	●	●
65	●	●	●	

Size(mm)	M6	M8	M10	M12
70	●	●	●	●
75	●	●	●	●
80	●	●	●	●
90	●	●	●	●
100	●	●	●	●
110	●	●	●	●
120	●	●	●	●
130	●	●	●	●
140	●	●	●	●
150	●	●	●	●
160		●	●	●
180		●	●	●
200		●	●	●
220			●	●
230			●	●
240			●	●
250				●
260			●	●
280			●	●
300			●	●

Threaded Bar, Nuts & Washers

Threaded Bar - 3 Metre Lengths or Cut to Size

Description	M4	M5	M6	M8	M10	M12	M16	M20	M24
Zinc Plated	●	●	●	●	●	●	●	●	●
A2 Stainless Steel	●	●	●	●	●	●	●	●	●
A4 Stainless Steel	●	●	●	●	●	●	●	●	●

Nuts Zinc Plated

Description	M4	M5	M6	M8	M10	M12	M16	M20	M24
Hexagon Full Nuts	●	●	●	●	●	●	●	●	●
Nylon Insert Nuts	●	●	●	●	●	●	●	●	●
Dome Nuts	●	●	●	●	●	●	●	●	●
Wing Nuts (self col)	●	●	●	●	●	●	●	●	●
Shear Nuts				●	●	●	●		
Ring Nuts			●	●	●	●	●	●	
Stud Connectors			●	●	●	●	●	●	

Nuts Stainless Steel

Description	M4	M5	M6	M8	M10	M12	M16	M20	M24
A2 Full Nuts	●	●	●	●	●	●	●	●	●
A4 Full Nuts	●	●	●	●	●	●	●	●	●
A2 Nylon Insert Nuts	●	●	●	●	●	●	●	●	●
A2 Dome Nuts	●	●	●	●	●	●	●	●	

Washers Zinc Plated

Description	M4	M5	M6	M8	M10	M12	M16	M20	M24
Flat Washers	●	●	●	●	●	●	●	●	●
Spring Washers	●	●	●	●	●	●	●	●	●
Internal Shakeproof	●	●	●	●	●	●	●	●	●
External Shakeproof	●	●	●	●	●	●	●	●	●
Taper Washers			●	●	●	●	●	●	●

Washers Stainless Steel

Description	M4	M5	M6	M8	M10	M12	M16	M20	M24
Flat Washers	●	●	●	●	●	●	●	●	●
Spring Washers	●	●	●	●	●	●	●	●	●
Internal Shakeproof	●	●	●	●	●	●	●	●	●
External Shakeproof	●	●	●	●	●	●	●	●	●

Repair Washers Zinc Plated

O/D (mm)	M4	M5	M6	M8	M10	M12	M16	M20	M24
20		●	●						
25		●	●	●	●				
30			●	●	●				
40			●	●	●	●			
50			●	●	●	●			

Repair Washers Stainless Steel

O/D (mm)	M4	M5	M6	M8	M10	M12	M16	M20	M24
25		●	●	●					
30			●	●	●				
40				●	●				

Square Plate Washers Zinc Plated

Size(mm)	M4	M5	M6	M8	M10	M12	M16	M20	M24
50 x 50				●	●	●	●	●	

Nylon Products

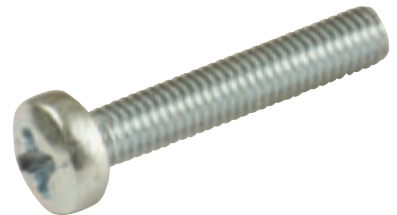
Description	M4	M5	M6	M8	M10	M12	M16	M20	M24
Nylon Washer	●	●	●	●	●	●	●	●	●
Nylon Bush			●	●	●	●	●	●	●
Nylon Cover Cap			●	●	●	●	●	●	



Machine Screws

Zinc Plated

Size(mm)	Csk Slot	Csk Pozi	Pan Slot	Pan Pozi	Csk Socket	Socket Cap
M4 x 6	●	●	●	●		
M4 x 8	●	●	●	●		●
M4 x 10	●	●	●	●	●	●
M4 x 12	●	●	●	●	●	●
M4 x 16	●	●	●	●	●	●
M4 x 20	●	●	●	●	●	●
M4 x 25	●	●	●	●	●	●
M4 x 30	●	●	●	●	●	●
M4 x 35	●		●	●		●
M4 x 40	●		●	●		●
M4 x 45	●					
M4 x 50	●		●	●		
M4 x 60	●	●				
M5 x 6			●	●		
M5 x 8	●	●	●	●		●
M5 x 10	●	●	●	●	●	●
M5 x 12	●	●	●	●	●	●
M5 x 16	●	●	●	●	●	●
M5 x 20	●	●	●	●	●	●
M5 x 25	●	●	●	●	●	●
M5 x 30	●	●	●	●	●	●
M5 x 35	●	●	●	●	●	●
M5 x 40	●	●	●	●	●	●
M5 x 45						●
M5 x 50	●	●	●	●		●
M5 x 60	●		●	●		●
M5 x 70	●					●
M6 x 8		●	●	●		
M6 x 10	●	●	●	●	●	●
M6 x 12	●	●	●	●	●	●
M6 x 16	●	●	●	●	●	●
M6 x 20	●	●	●	●	●	●
M6 x 25	●	●	●	●	●	●
M6 x 30	●	●	●	●	●	●
M6 x 35	●	●	●	●	●	●
M6 x 40	●	●	●	●	●	●
M6 x 45	●	●		●		●
M6 x 50	●	●	●	●		●
M6 x 60	●	●		●		●
M6 x 65				●		
M6 x 70	●			●		
M6 x 80	●			●		
M6 x 100	●			●		
M8 x 16	●	●	●		●	●
M8 x 20	●	●	●	●	●	●
M8 x 25	●	●	●	●	●	●
M8 x 30	●	●	●	●	●	●
M8 x 35	●	●			●	●
M8 x 40	●		●		●	●
M8 x 50	●	●	●	●	●	●
M8 x 60	●				●	●
M8 x 80	●				●	●
M10 x 20	●				●	●
M10 x 25	●		●		●	●
M10 x 30	●		●		●	●
M10 x 35	●				●	●
M10 x 40	●		●		●	●
M10 x 50	●				●	●
M10 x 60	●				●	●
M12 x 25	●				●	●
M12 x 30	●				●	●
M12 x 35	●				●	●
M12 x 40	●				●	●
M12 x 50	●				●	●
M12 x 60	●				●	●



Clutch Head Machine Screws

Zinc Plated

M6 x 40

Lindapter Steelwork Fixings

Types A & B are used when the top and bottom beam flanges of the sections are of a known thickness. Type A is used to captivate the bolt head and stop it rotating. Type B has a flat top to allow a nut to be tightened onto it.

Type A - Recessed Fixing



Code	Bolt Size	Tail Length (mm)		
		Short	Medium	Long
A08	M8	-	4.0	-
A10	M10	4.0	5.0	7.0
A12	M12	4.5	6.0	9.5
A16	M16	5.5	8.0	11.0
A20	M20	7.0	10.0	12.5
A24	M24	9.0	12.0	16.0

Type B - Flat Top Fixing



Code	Bolt Size	Tail Length (mm)		
		Short	Medium	Long
B08	M8	-	4.0	-
B10	M10	4.0	5.0	7.0
B12	M12	4.5	6.0	9.5
B16	M16	5.5	8.0	11.0
B20	M20	7.0	10.0	12.5
B24	M24	9.0	12.0	16.0

Type AF is for applications where high frictional loads are encountered. To be used with packing pieces and a high strength location plate. The AFW Washer can be used to fill the recess of Type AF to form a flat surface so that the nut can be tightened. Additionally it features two projections which when inverted will captivate the larger hexagons of HSE Bolts.



Type AF - High Friction Clamp
Type AFW - Adapter Washer

Code	Bolt Size	Tail Length (mm)		
		Short	Medium	Long
AF12	M12	5.0	12.5	-
AF16	M16	8.0	15.0	-
AF20	M20	10.0	18.0	-
AF24	M24	15.0	30.0	-

Type CF is a High friction clamp that hooks over flanges of I-beams, angles and channels. Lindapter markings act as a unique anti-rotation device. Can be combined with all Lindapter Girder Clamp products including type AF.



Type CF High Friction Clamp

Code	Bolt Size
CF12	M12
CF16	M16
CF20	M20

Types D2 & D3 incorporate a set screw to accommodate a wide range of flange thicknesses. Type D2 has a recessed head to captivate the bolt head and stop it rotating. The D3 has a flat top in order to rotate the nut head in order to tighten the assembly.



Type D2 - Adjustable Tail

Code	Bolt Size
D210	M10
D212	M12
D216	M16
D220	M20
D224	M24

The LR is able to adjust itself to meet the flange thickness of the steel beam being connected. Consisting of two parts, the LR is suitable for applications where the flange thickness cannot be easily measured prior to installation.



Type LR - Self Adjusting Clamp

Code	Bolt Size
LR10	M10
LR12	M12
LR16	M16
LR20	M20
LR24	M24

Type LS is a self adjusting clamp for various flange thicknesses and slopes up to 10°. The special serrations on the tail prevent the clamp rotating during installation. The LS tail spans over slotted holes.



Type LS - Self-Adjustable Stainless Steel

Code	Bolt Size
D312	M12
D316	M16

Packing used to adjust the tail length of the clamp to meet differing beam flange thicknesses.



Type CW - Clipped Washer

Code	Bolt Size
CW08	M8
CW10	M10
CW12	M12
CW16	M16
CW20	M20
CW24	M24

P1 is deeper than the CW, with P2 the deepest piece, twice P1. Available in two lengths, short and long.

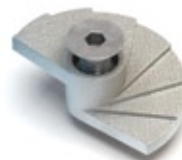


Type P1 and P2 - Packings

Bolt Size	P1 Short	P2 Short	P1 Long	P2 Long
M8	P1S08	P2S08	P1SL08	P2L08
M10	P1S10	P2S10	P1SL10	P2L10
M12	P1S12	P2S12	P1SL12	P2L12
M16	P1S16	P2S16	P1SL16	P2L16
M20	P1S20	P2S20	P1SL20	P2L20
M24	P1S24	P2S24	P1SL24	P2L24

The product consists of a malleable iron body casting with a countersunk socket screw; the eccentric stepped web of the casting allows it to lock under the steelwork providing full face contact when torque is applied. For thicker flanges packing pieces will be supplied. Lloyds' Register Type Approval covers clamping force and vibration.

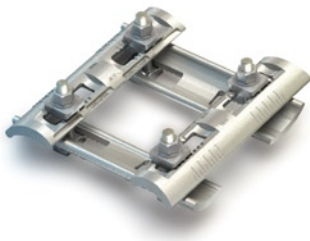
Type FF - FloorFast™



Code	Bolt Size	Thickness	
		Floorplate	Flange
FF08	M8	4.5-12	3-15
FF10	M10	5-12	3-15
FF12	M12	6-12	3-15

Lindapter Steelwork Fixings

The Flush Clamp is an adjustable steelwork connection that clamps the flanges of two steel beams together without the use of a location plate. This assembly forms a clamp that is suitable for connecting beams of varying flange widths and thicknesses.



Type FC - Flush Clamp

Bolt Size	Flange Width	Flange Thickness
M16	75-180mm	5-19mm

Type F9 is a general purpose clamp which can be used to clamp steel beams directly together without the need for a location plate. Suitable for connecting all types of parallel flanged steelwork.



Type F9 - Flange Clamp

Code	Bolt Size
F910	M10
F912	M12
F916	M16
F920	M20
F924	M24

Suitable for hollow sections, tubes and where access is available from one side only. For high corrosion protection the Hollo-Bolt® comes with additional JS500 protection as standard or hot dip galvanised. Awarded the Design Council's Millennium Product status for innovation.



Hollo-Bolt®

Code	Bolt Size
HB08-1	M8x50
HB10-1	M10x55
HB12-1	M12x60
HB16-1	M16x75
HB20-1	M20x90

(Other sizes available)

The Hollo-Bolt® Flush Fit has no protruding bolt head or collar, creating immense opportunity for architectural steelwork.



Hollo-Bolt® Flush Fit

Code	Bolt Size
HBFF08-1	M8x50
HBFF10-1	M10x60
HBFF12-1	M12x60

Self heading bolt suitable for fixing to hollow-sections, tubes and where access is available from one side only. The Lindibolt® uses a standard clearance hole.



Type LB2 - Lindibolt 2®

Code	Bolt Size
LB10	M10
LB12	M12
LB16	M16
LB20	M20
LB24	M24

Lindapter Composite Decking Fixings

The Alphawedge is designed for Ribdeck AL, E60 and 80 profiles manufactured by Richard Lees Steel Decking.



Type AW - Alphawedge

Code	Rod
AW06	M6
AW08	M8
AW10	M10

The Multiwedge 2 is designed for MD60 and MD80 profiles manufactured by Kingspan Structural Products.



Type MW2 - Multiwedge 2

Code	Rod
MW06	M6
MW08	M8
MW10	M10

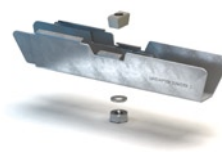
The TR60 is designed for TR60 and 80 profiles manufactured by Structural Metal Decks.



Type TR60

Code	Rod
TR6006	M6
TR6008	M8
TR6010	M10

The Slimdek 2 is designed for the CF225 profile manufactured by Corus Panels and Profiles.



Type SD2 - Slimdek 2

Code	Rod
SD206	M6
SD208	M8
SD210	M10

The V-Nut fits the re-entrant channel of several composite floor deckings including, Structural Metal Decks R51, Corus Panel & Profiles CF51, Richard Lees Steel Decking Holorib, Kingspan Structural Products MD50.



Type VN - V-Nut

Code	Rod
VN06	M6
VN08	M8
VN10	M10

Blind Bolt High Performance Cavity Fixing

Applications:	Benefits:
Box Girders	Blind Fixing Applications
Cladding	Cost Efficient
Handrails	Labour Saving
Roofing	Removable in most applications
Scaffolding	Restricted Access
Suspended Ceilings	



High Tensile Zinc & Yellow Passivated Blind Bolt

Code	Size (mm)	Hole Dia(mm)	Fixing Thickness(mm)	Anchor Clearance(mm)	Depth Clearance(mm)	Special Features
BB0850ZYASM	M8 x 50	9	9-24	19	25	
BB1060ZYASM	M10 x 60	11	10-30	23	30	
BB10130ZYASM	M10 x 130	11	10-100	23	30	
BB1270ZYASM	M12 x 70	13	12-35	26	35	
GBB1690ZYASM	M16 x 90	17	13-43	36	43	Grooved
GBB20110ZYASM	M20 x 110	22	21-56	44	56	Grooved
GBB20140ZYASM	M20 x 140	22	21-86	44	56	Grooved
GBB24130ZYASM	M24 x 130	26	21-66	53	64.5	Grooved

Hook Head High Tensile Zinc & Yellow Passivated Blind Bolt

Code	Size (mm)	Hole Dia(mm)	Fixing Thickness(mm)	Anchor Clearance(mm)	Depth Clearance(mm)	Special Features
HBB1060ZYASM	M10 x 60	11	10-30	23	31	
HBB1270ZYASM	M12 x 70	13	12-35	26	35	

Folded Eye High Tensile Zinc & Yellow Passivated Blind Bolt

Code	Size (mm)	Hole Dia(mm)	Fixing Thickness(mm)	Anchor Clearance(mm)	Depth Clearance(mm)	Special Features
FEBB1060ZYASM	M10 x 60	11	10-30	23	31	
FEBB1270ZYASM	M12 x 70	13	12-35	26	35	

Welded Eye High Tensile Zinc & Yellow Passivated Blind Bolt

Code	Size (mm)	Hole Dia(mm)	Fixing Thickness(mm)	Anchor Clearance(mm)	Depth Clearance(mm)	Special Features
WEBB1060ZYASM	M10 x 60	11	10-30	23	31	
WEBB1270ZYASM	M12 x 70	13	12-35	26	35	

High Tensile Hot Dipped Galvanised Blind Bolt

Code	Size (mm)	Hole Dia(mm)	Fixing Thickness(mm)	Anchor Clearance(mm)	Depth Clearance(mm)	Special Features
BB1270GASM	M12 x 70	13	12-35	26	35	
GBB1690GASM	M16 x 90	17	12-43	36	43	Grooved
GBB20110GASM	M20 x 110	22	25-56	44	56	Grooved
GBB20140GASM	M20 x 140	22	25-87	44	56	Grooved
GBB24130GASM	M24 x 130	26	21-66	53	64.5	Grooved

Tools

Description	Bolt Reference	Size(mm)	Torque/Nm*
M16 Safety gauge	BB0850	M8 x 50	12.5
M20 Safety gauge	BB1060	M10 x 60	27.0
M24 Safety gauge	BB1270	M12 x 70	42.7
Gauging tool	BB1290	M12 x 90	42.7
	GBB1690	M16 x 90	132.3
	GBB20110	M20 x 110	305.0
	GBB20140	M20 x 140	315.6
	GBB24130	M24 x 130	394.6

IMPORTANT SAFETY INFORMATION

Do not exceed maximum Torque settings as recommended.
Ensure anchor is in the fully open position before applying Torque, or pin will shear.

*Head Restrained-Nut Rotated Average Safe Working Load

Limited Range available in Stainless Steel

